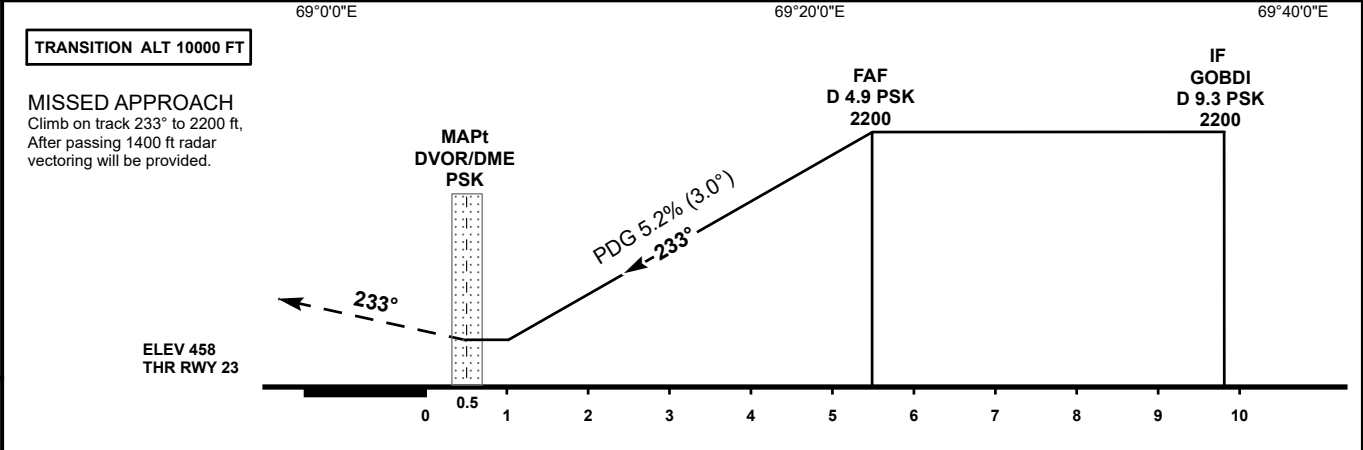
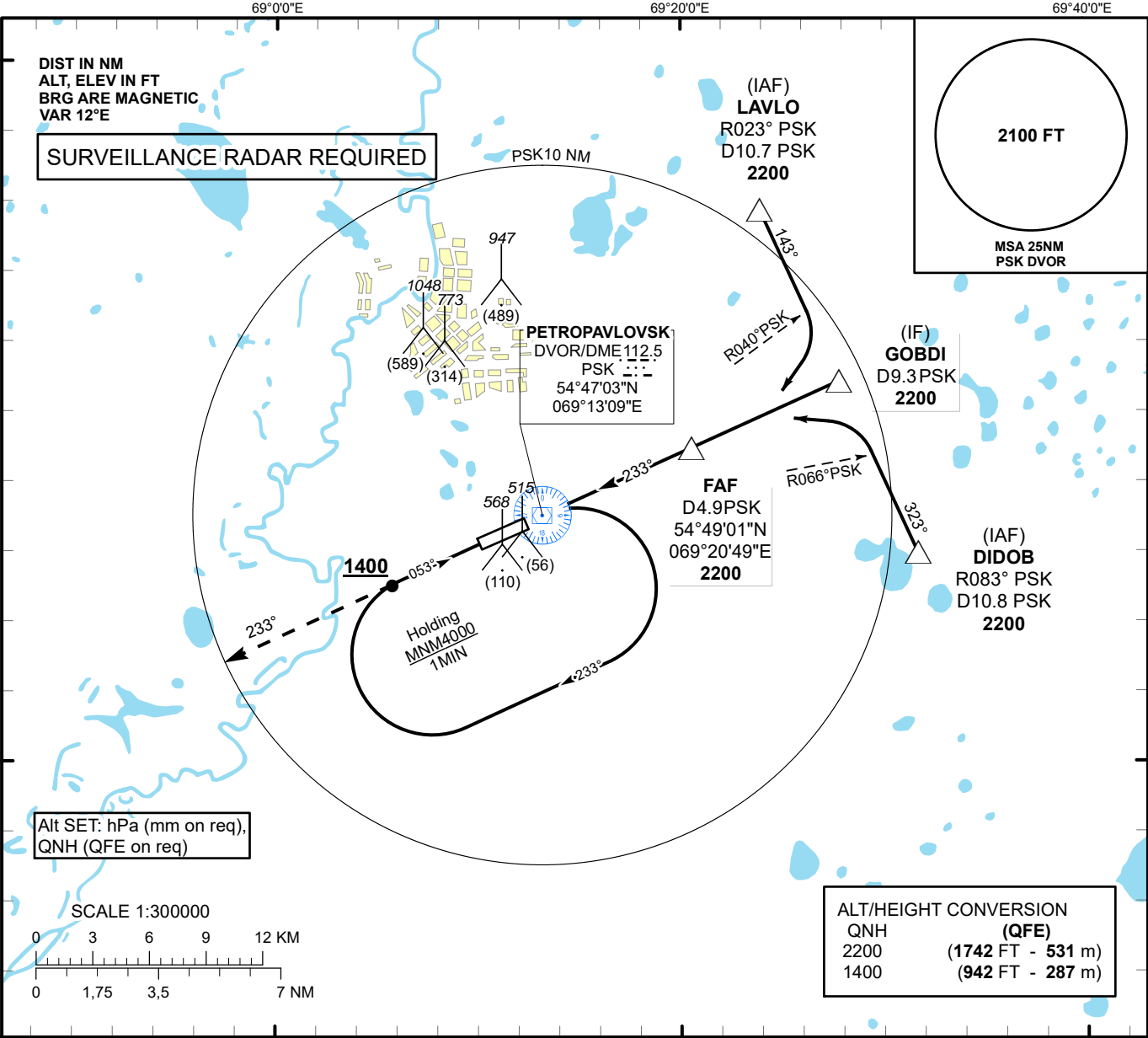


INSTRUMENT
APPROACH
CHART - ICAO

AERODROME ELEV **458 FT**
HEIGHTS RELATED TO
AD ELEV

PETROPAVLOVSK TOWER 123.7
PETROPAVLOVSK ATIS (EN) 127.4
PETROPAVLOVSK ATIS (RU) 118.3

PETROPAVLOVSK
VOR/DME Y
RWY 23



Aircraft Category		A	B	C	D	DIST to THR	NM	1	2	3	4	5	5.4
Straight-in Approach OCA/H						DME PSK	NM	0.5	1.5	2.5	3.5	4.5	4.9
	VOR/DME	820(370)	820(370)	820(370)	820(370)	ALTITUDE	FT	825	1144	1462	1781	2099	2200
						HGT	FT	367	686	1004	1323	1641	1742
Aerodrome Operating Minima MDH ft x RVR(CMV)	VOR/DME												
						GS	Kt	80	100	120	140	160	180
						Desc.Rate(5.2%)	ft/min	420	530	640	740	850	960
						FAF-MAPt(4.9 NM)	min:sec	3:41	2:56	2:27	2:06	1:50	1:38

PETROPAVLOVSK
VOR/DME Y

AERONAUTICAL DATA TABULATION

VOR approach to RWY23 from LAVLO, GOBDI, DIDOB	
Fix/point	Coordinates
PSK D4.9 (FAF)	54°49'01.0"N 069°20'49.1"E
GOBDI (IF) IPT D9.8 PSK D9.3	54°50'52.3" N 069°27'49.3" E
LAVLO (IAF) R023° PSK D10.7	54°55'46.2" N 069°23'54.9" E
DIDOB (IAF) R083° PSK D10.8	54°45'58.2" N 069°31'42.9" E
PSK DVOR/DME	54°47'02.9" N 069°13'08.7" E
THR RWY23	54°46'50.42" N 069°12'21.41" E
Final approach descent angle is 3.0°	